

### 2 DAYS/1 NIGHTS ALL INCLUSIVE PROGRAM

#### Itinerary

Sample Itinerary (subject to change due to the weather, specific interests, physical abilities of our guests and the availability of each place to be visited)

#### Highlights

- Middle of The World
- Hummingbirds Garden
- Chocolate Factory
- Butterfly Farm
- Mindo Cloud Forest



### Day 1

#### Middle of the World, Hummingbirds Garden and Chocolate Factory

##### Description

We will pick you up from your Hotel in Quito or Airport area at 9:00 am. Our driver will pick you up. During the transfer to Las Terrazas de Dana Boutique Lodge & Spa in Mindo Cloud Forest, you will enjoy a snacks box which includes some natural juice, ham and cheese sandwich and a chocolate bar. On the way to our Hotel, you will have chance to stop and enjoy the amazing Middle of the World, the interesting Intiñan Museum, the wonderful Pululahua Viewpoint and Los Armadillos Hummingbirds Garden in which you can also have a relaxing time.

Arrival time to Las Terrazas de Dana Boutique Lodge & Spa will be around 1:30 pm. At the Hotel you will have a natural welcome drink and also you will get fresh with a cool towel. Then, all of our guest will receive a Hotel and Program Briefing. After your checking and briefing, you will enjoy your Bungalow for a while, and then you will be invited to join us for your lunch in our Restaurant.

After lunch, and when you feel ready, we will visit a Hummingbirds Garden located in Mindo Town in which you will have the chance to enjoy the best and most colorful display of hummingbirds. When your visit to the Hummingbirds Garden has finished, you will know a very interesting and famous Chocolate Factory. A guide will let you know all the details about the process to make chocolate and at the end of the tour you will taste different types of this exquisiteness.

At the end of these visits, we will return to the Hotel to enjoy a relaxing time in your private terrace or our swimming pool.

Dinner time 7:00 pm (Flexible schedule). You can enjoy dinner in your private terrace or in our Restaurant.

**Meals:** Snacks Box, Lunch & Dinner

**Accommodation:** Las Terrazas De Dana Boutique Lodge & SPA

**Difficulty:** Easy

**Transportation:** Mini Bus/Pick up track/Mini suv





### Day 2 Chairlift and Butterfly Farm

#### Description

Breakfast starts at 8:00 in the morning. You will love the view in your private terrace while you enjoy your breakfast. After this, and when you feel ready, hopefully no more than 9:30, we will continue to the Chairlift which takes 20 minutes to climb up to the top area of Mindo's Valley. You will enjoy awesome views of The Mindo Cloud Forest Ecosystem which is known worldwide for its biodiversity and birding. Mindo Cloud Forest is also characterized by the persistent low-lying clouds that deliver lots of moisture and hence thick plant growth. The next stop is the great Butterfly Farm in which you can see more than 1000 colorful butterflies flying all around you, their famed bamboo and pambil towers will let you admire the Cloud Forest from above.

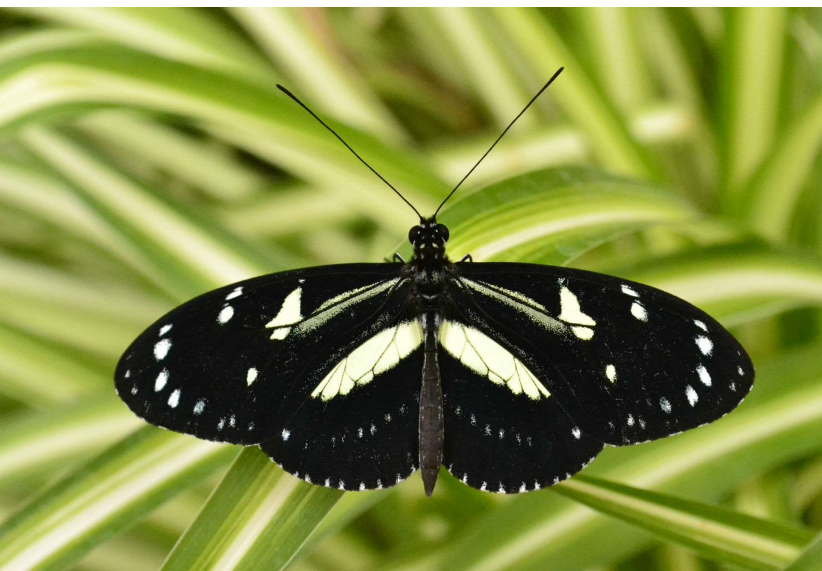
After this wonderful morning, you will get back to Las Terrazas de Dana Boutique Lodge & Spa. At the Hotel, you will have plenty of time to pack your stuff and check out at noon. Finally, your private transfer to Quito or Airport area will be ready for you. Our driver will pick you up.

**Meals:** Breakfast & Snacks Box

**Accommodation:** Las Terrazas De Dana Boutique Lodge & SPA

**Difficulty:** Easy

**Transportation:** Pick up track/Mini suv



### **Important Notes**

- The itinerary described is a sample itinerary and subject to change due to the weather, specific interests, physical abilities of our guests and the availability of each place to be visited.
- Tailor made itinerary is liable to be organized according to guests needs.
- First day stops: Middle of The World, Intiñan Museum, Pululahua Viewpoint and Los Armadillos Hummingbirds Garden, are included stops and up to the guests.
- First day program does not include breakfast.
- Last day program does not include lunch and dinner.
- Lunch and dinner includes a soft drink, natural juice or regular beer.
- The transportation to every site in which the activities will take place, will be set by private vehicles which could be a pick up truck, mini suv, suv or mini bus.
- The Spa services will have a 20% discount for all of our guests.
- Spa massage services must be requested at least 2 hours in advance.
- Our therapists are capable to assist two guests at the same time in any of the therapies and massages listed.
- Each Bungalow at Las Terrazas De Dana Boutique Lodge & Spa has a Safety Deposit Box.
- At Las Terrazas De Dana Boutique Lodge & Spa's boutique you will find a small selection of exploration garments, handicrafts and essentials to make sure you've got everything you need, and then some. Some items are subject to availability.
- Last day program, there is Late Check Out service available under request for an extra \$60.00 fee each bungalow.
- Additional and not included expenses could be settled down by cash, Visa, Mastercard, American Express or Diners Club at Front Desk in Las Terrazas De Dana Boutique Lodge & Spa when guests are checking out.

### **Special Reminders**

- Please do not litter, either in the Cloud Forest or during your visits or activities.
- Bright colored clothing can attract unwanted animals and insects.
- Do not bring any food or drink other than water into the Cloud Forest.
- Always stay with your guide during your visits into the Cloud Forest.
- During your hikes into the Cloud Forest please try to walk slow and do not speak loud.
- Use natural insect repellent during your visits into the Cloud Forest.
- Keep your eyes and skin safe from tropical sun by using hat or cap and sunglasses.
- For a comfortable experience, please pack socks that will be gentle on your feet.
- Make sure your shoes are up to visit the Cloud Forest, use comfortable hiking shoes.
- The sun in the tropic can be intense, please pack sunblock.
- Portable flashlight will be a great help during evening and night walks.

### Packing List

- Hat or cap
- Sunglasses
- Bathing suit
- Dark or earth toned long sleeve tees or expedition shirts
- Dark or earth toned lightweight pants
- Breathable or moisture wicking crew length socks
- Comfortable hiking shoes
- Raincoat or Rain poncho
- Sunblock
- Natural insect repellent
- Camera & accessories
- Lightweight sweater or jacket
- Portable flashlight
- Ziplock style baggies in which to keep your items dry
- Batteries
- Binoculars

### **Included**

- Private shuttle from Quito or Airport area to Las Terrazas De Dana Boutique Lodge & Spa. (Transfer In). Other location available under request with a supplement.
- Private shuttle from Las Terrazas De Dana Boutique Lodge & Spa (Transfer Out) to Quito or Airport area. Other location available under request with a supplement.
- Accommodation in our Luxury Lodge into Mindo Cloud Forest: Las Terrazas De Dana Boutique Lodge & Spa.
- Welcome drink and fresh cool towel.
- Dana Experience "Water Refill Silver Bottle".
- Snacks Box served during the shuttle service from Quito (or required location) to Mindo Cloud Forest (First Day).
- Snacks Box served during the shuttle service from Mindo Cloud Forest (Last Day) to Quito (or required location).
- Breakfast, lunch & dinner in Las Terrazas De Dana Boutique Lodge & Spa as described in every day of the program.
- Private transportation to the location in which every activity described in the tour takes place.
- All the activities described in the program.
- Entrance tickets to every activity described in the program.
- Laundry service.
- Coffee, milk, tea & purified water in Las Terrazas De Dana Boutique Lodge & Spa.
- Satellite Television.
- Wifi internet service.
- Room Service.

### Not Included

- Breakfast first day of the program.
- Lunch and Dinner last day of the program.
- Bilingual guide during transportation from Quito to Mindo Cloud Forest. Available under request.
- Alcoholic and no described drinks.
- Meals in places or restaurants not listed.
- Items listed in the Packing List.
- Travel and health insurance.
- Personal expenses.
- Late check out.
- Tips & gratuities.
- Activities and services not listed in the program.





## **LAS TERRAZAS DE DANA BOUTIQUE LODGE & SPA PROGRAMS**

---

### **Payment Policies**

For reservations of Tours and Programs developed by Dana Expeditions in the Chocó Andino and Mindo Cloud Forest, with accommodation in Las Terrazas de Dana Boutique Lodge & Spa, a deposit of 20% of the total value of the Program is required to confirm your program.

The remaining 80% payment can be done at your arrival in Las Terrazas de Dana Boutique Lodge & Spa.

### **Cancellation Policies**

For cancellations of Tour or Programs developed by Dana Expeditions, a cancellation period is established without penalty up to 30 days before the arrival of the passengers. If the cancellation is made in a period established between 29 and 0 days considered to the date of arrival, the penalty will be equal to 100% of the value previously deposited to guarantee the reservation of the Program.

